

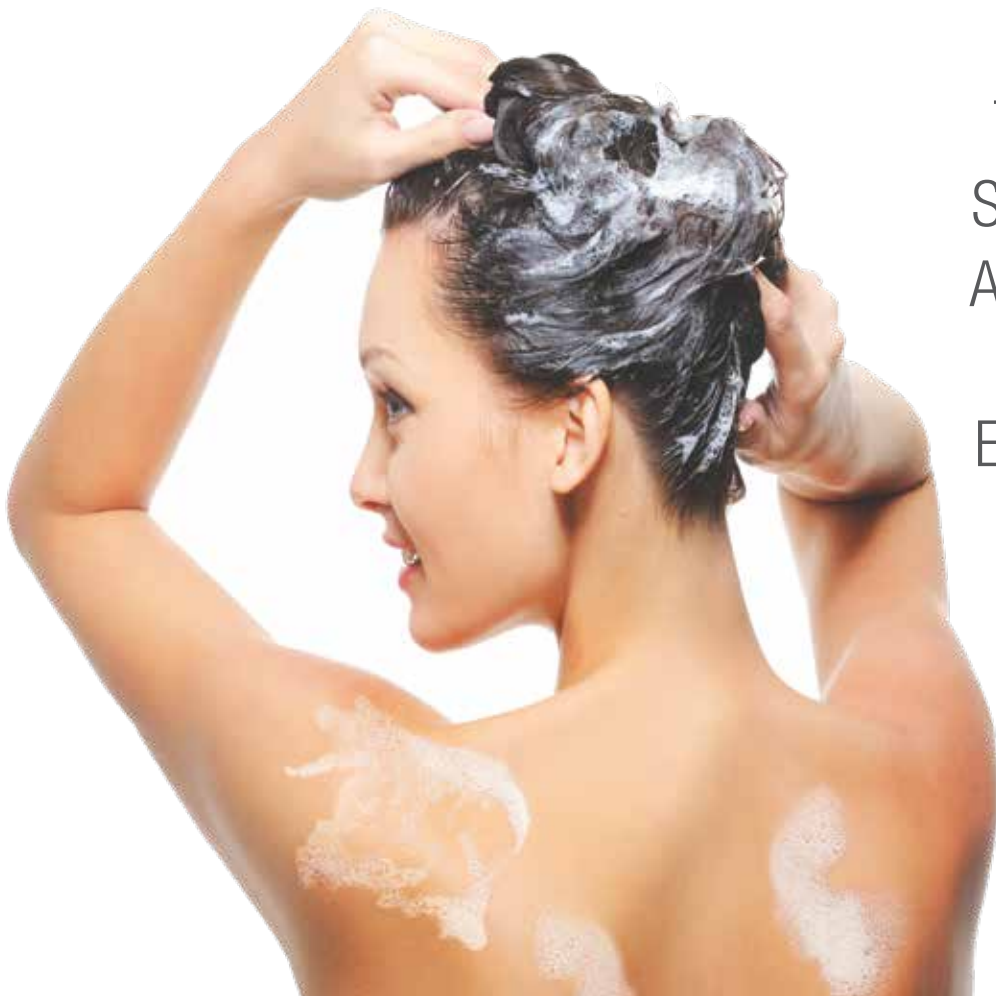
Enliven™ Bath & Shower Gel

Antibacterial Body Cleansing Gel

Enliven™ is a powerful anti-bacterial cleansing gel, infused with nourishing natural botanical extracts that gently clean, enhance, moisturize and condition your skin. Pamper your skin and enliven your senses with this gentle, high-foaming toxin-free gel that cleans and conditions your skin with enhanced moisturizing properties. Removes dirt, oil, and impurities while drenching the skin in conditioning moisture. Cleans without harsh chemicals and rinses cleanly and thoroughly leaving skin fresh and receptive.



Turn Your
Shower Into
An Amazing
Skin Care
Experience!



The Sisel logo consists of a stylized cluster of dots above the brand name 'sisel' in a lowercase, sans-serif font.



FEATURES AND BENEFITS

- No toxins or phosphates.
- Leaves skin glowing & soft.
- Anti pollution body cleansing gel.*
- Gentle enough to use anywhere and every day.
- Provides the perfect balance of freshness and hydration.*
- Leaves no heavy buildup as it rinses away.

DIRECTIONS

Apply to body. Rub to lather, wash, and rinse. If using as a bubble bath, pour gel under running water until it foams.

CAUTION

For external use only. Avoid direct eye contact. If product gets into eyes, rinse thoroughly with water. If irritation or redness occurs, discontinue use. Keep out of the reach of children.

*These statements have not been evaluated by the Food and Drug Administration. This product is not intended to diagnose, treat, cure or prevent any disease.

Enliven™ Bath & Shower Gel

Antibacterial Body Cleansing Gel

500 mL/16.9 fl oz

INGREDIENTS:

Water (Aqua), Sodium Lauroyl Sarcosinate, Sodium Lauroamphoacetate, Cetyl Betaine, Cocamidopropyl Betaine, Citric Acid, Phenoxyethanol, Caprylyl Glycol, Fragrance, Sorbic Acid, Cetrimonium Chloride, Butylene Glycol, Aloe Barbadensis Leaf Extract, Sodium PCA, Wheat, Amino Acids, Panthenol, Chamomilla Recutita (Matricaria) Flower Extract, Salvia Officinalis (Sage) Leaf Extract, Urtica Dioica (Nettle) Extract, Rosmarinus Officinalis (Rosemary) Leaf Extract, Symphytum Officinale Extract, Sodium Hyaluronate, Potassium Sorbate, Hydroxyproline.



Manufactured for:
Sisel International, LLC
1328 West Spring Creek Place
P.O. Box 369, Springville, UT 84663

Sisel International AG
Grundacher 5
6060 Sarnen, Switzerland

Take advantage of the Sisel opportunity today. Get started by contacting the person who gave you this flyer, or go online at www.sisel.net for more information.

MANUFACTURED IN USA
F130639-10-01